



NIGHTfall
A Stellar Rainbow

FESTIVAL PROGRAMME

Thurs 2nd - Sun 5th Dec

**Families, friends and curious rainbow seekers,
we are delighted to present our rainbow
themed Nightfall for 2021!**

Share your Nightfall experience with us on social -
use the hashtag **#Nightfall21 #AStellarRainbow**

**BE GONE DARK DAYS AND
JOIN US IN STEWART PARK,
MIDDLESBROUGH TO EXPERIENCE
A FEAST OF COLOUR ON AN
ILLUMINATED ADVENTURE TO
THE END OF THE RAINBOW**

Nightfall is a family friendly light trail of beautiful artworks, music, performance and magical moments. We have chosen the rainbow theme to bring a little colour to your life after a long year of restrictions and uncertainty. Light drives the shadows away and has the power to bring our community together again. We hope you enjoy your Nightfall experience.

Preparing for your visit

Nightfall is an outdoor event designed to go ahead in most weathers. Make sure you wrap up warm and wear sensible shoes - we advise wellies or walking boots.

All event information, including travel information and parking information, can be found on our website FAQs which you can access at

www.nightfallfestival.co.uk



LIGHT TRAIL

Your Nightfall adventure will begin with a magical trail which takes you around the grounds of Stewart Park where you will experience wonderful light artworks which bathe the park in a rainbow of colour.

Throughout the Nightfall route, listen out for the beautiful and atmospheric Stellar Rainbow soundtrack which has been specially created for us by local composer Roma Yagnik.

#Nightfall21 Light Trail



Image: Canopy of Stars; Stellar Rainbow by Artworks SY



LOOK INSIDE THE RAINBOW

Features for children

by Tracey Meek

Created specially for little ones are a series of features and mini colourful worlds which bring to life a land inside the rainbow where tiny people go about their day. Peek inside the bird boxes and perspective box for a closer look at them, see the magical greenhouse which glows in the night and the clouds and spheres that float amongst the trees. We hope these features around the route will provide a little magic for our younger nightfallers!

At each of the features you will find a QR code, use your phone camera (or your adult's phone!) to scan the code and it will unveil a little secret about its miniature world.

The features will be marked on a route plan which will be available at the event.

FROM TEXT TO TRAIL

Artworks inspired by commissioned local writers.

This year we commissioned four local writers to create work based on the rainbow theme. Poems and stories written by Lisette Auton, Kirsten Luckins, Carmen Marcus and Mark Robinson can be found in different forms across Nightfall and online. The pieces are full of colours and light - but also enjoy the dark from which those colours burst. There are things lost and things found, dreams and journeys, transformations and holding onto the people we love.

INTO THE STELLAR RAINBOW

by Kirsten Luckins

Kirsten Luckins is a poet, performer, and spoken word theatre-maker based on the north-east coast of England. Her third collection, *Passerine*, was published by Bad Betty Press in 2021. Look out for a section of her poem, *Into the Stellar Rainbow* which was written for *Nightfall* and can be seen on the side of the Captain Cook Museum.

MOTHER AUGARY

by Carmen Marcus

Listen out for the tale of Mother Augary in our Reflections space, the story of an ancient woman who keeps a junk shop in the Ghost Nebula and is our dream guide to the stars. She guides us to her Junk Shop of lost and unsaid things floating amongst the stars, strong enough to hold the objects of our loves, losses and regrets. Mother Augary invites us to leave something behind, something we need to let go of, that she will keep

safe so that we can move forward ready for the growth of the New Year. *Mother Augary* was written for *Nightfall* by Carmen Marcus, a poet, novelist and playwright. She lives in Saltburn-by-the-Sea on the wild North Yorkshire coast. Her debut novel *How Saints Die* was published with Harvill Secker in 2017.

Mother Augary, written and performed by Carmen Marcus, with additional voices provided by Mia Braine, Julie Easley, Esther Harrington, Kirsten Luckins, and Chris Poole. Soundscape created by Grace Stubbings.

ALL OF THIS

poem by Mark Robinson, with neon artwork by Neon Workshops and EL wire by Light Up North

Mark Robinson is a widely published poet who lives in Eaglescliffe. His *Selected Poems How I Learned to Sing* is published by Smokestack and his poem 'The Infinite Town' is carved on a large plinth on Stockton High Street. He has written three poems inspired by the rainbow theme specially for *Nightfall*. One of the poems is an acrostic, where the first letter of each line spell out the colours of the rainbow. They have been brought to life in EL wire, leading us to a wonderful neon artwork created by Neon Workshops which shines a light on the poem's title, *All of this* is spelt by stars.

Full versions of these poems and stories can be found at www.nightfallfestival.co.uk

THE NIGHT GARDEN

by Stellar Projects

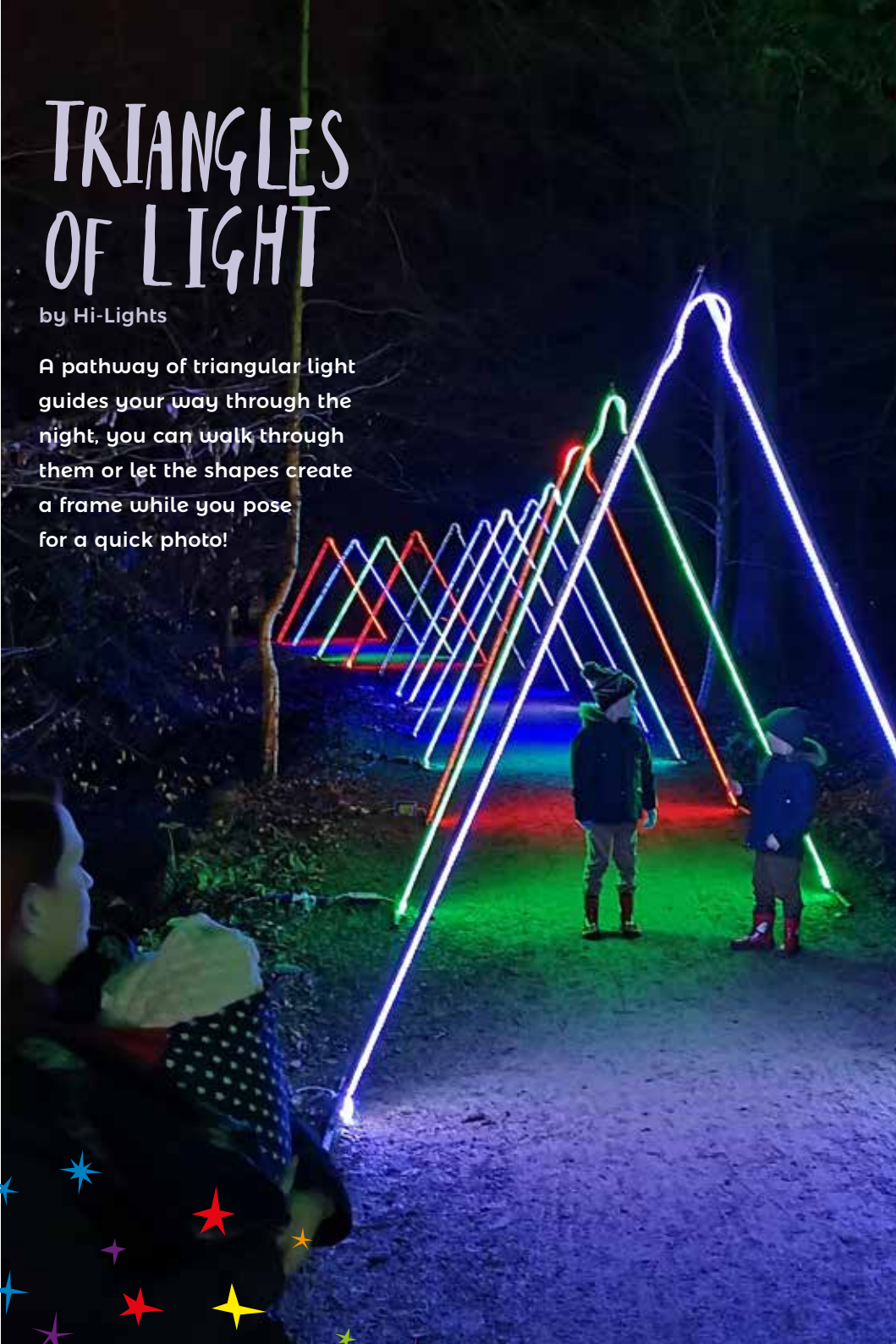
The beauty of a summer garden is brought to life at night, celebrating the simple pleasure to be found in the natural world. Larger than life flowers sway and dance in the sunlight, butterflies flutter in and out of view and bees fly by, transforming the space into a peaceful garden full of life. The artwork plays with scale and perspective by putting the viewer amongst towering blooms and transporting them to a summer's day.

Film created by Ithica Films
with animation by Visual Lane
and soundtrack by Paula McGough.

TRIANGLES OF LIGHT

by Hi-Lights

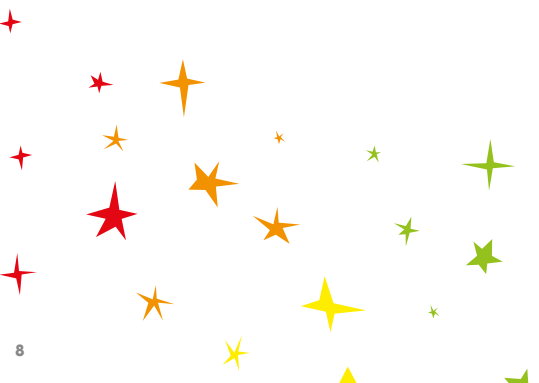
A pathway of triangular light guides your way through the night, you can walk through them or let the shapes create a frame while you pose for a quick photo!

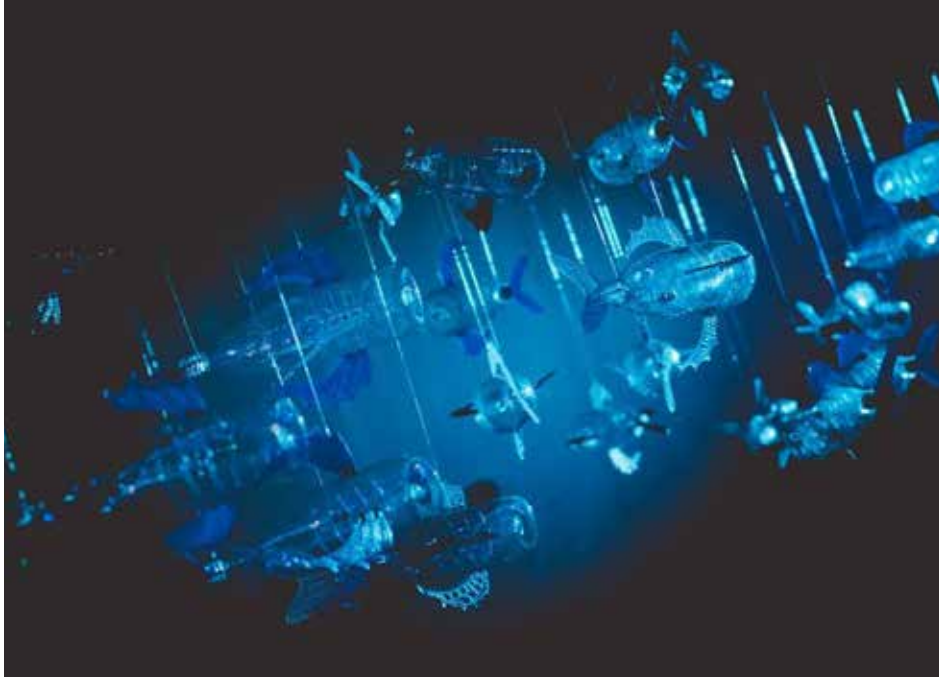


RAINBOW SERPENT

by Hologon

A coiled snake lights the darkness around it with tranquil undulating illuminated patterns and outbursts of rainbow technicolour. Rainbow Serpent creates space for contemplation and playfulness. The artwork is inspired by an ancient aboriginal myth in which the Rainbow Serpent is said to be responsible for creation, light and life, as well as destruction, transformation and healing.





BOTTLED OCEAN

by George Nuku
(Captain Cook Birthplace Museum)

Along the Nightfall route, make sure you call in to the Captain Cook Museum where Nightfall visitors will have the opportunity to preview a wonderful new exhibition by George Nuku.

George is a highly regarded artist of Maori, Scottish & German descent. His artistic concepts are bold and unusual, working with many different mediums. He carries the tradition of his people handed down for thousands of years in an art form that promises to expand life and enhance survival.

George's new exhibition - 'Bottled Ocean', presents an imaginary world in the year 2121. The ice caps have melted and the Earth has flooded. Life forms have been forced to adapt to ever-present plastic. This thought-provoking exhibition illustrates what the world might look like a century from now if plastic permeates life on earth on every level.



SUBMERGENCE

by Squid Soup

Submergence is a large, immersive, walkthrough experience which uses many thousands of individual points of suspended light to create feelings of presence and movement within physical space. The installation transforms space into a hybrid environment where virtual and physical worlds coincide. As you enter the piece, you are walking into an environment occupied by both real and virtual components, and you can affect both.

Image: Pamela Raith / Phoenix Leicester



END OVER END

by Studio Vertigo

This giant, glowing toy slinky transforms a corner of the park into a nocturnal playground. Each coil of the oversized spring is illuminated in turn, creating the familiar flowing form of a Slinky tumbling into the shadows. Inspired by the popular children's toy, End Over End playfully subverts our sense of scale and creates a colourful moment of joy.

Originally commissioned for Lumiere Durham.

WHIPPET TALES

by Whippet Up

Whippet Tales is a hand-crafted puppet theatre that tells ancient and new folktales. The audience is invited to spin the wheel to select the show. Music and songs composed for the show includes pieces by the Saltburn based 'Phoenix Voices' Community Choir.

Like all of Whippet Up's pieces,

Whippet Tales is designed, built, and performed with local people who find, or are referred into, Whippet Up for a wellbeing boost. Whippet Tales is a family friendly performance suitable for all ages.

Whippet Tales is part of Phoenix Rising, commissioned by Stockton International Riverside Festival, and supported by an Arts Council Lottery grant. Music and songs composed for the show includes pieces by the Saltburn based 'Phoenix Voices' Community Choir. With additional original music composed and performed by Liz Corney.

CANOPY OF STARS [★] STELLAR RAINBOW

by ArtWorks SY

The inspiration for the Canopy of Stars came from an image posted by NASA on their Instagram. The photograph of Atlanta, taken from space, was captioned "Darkness cannot drive out darkness, only light can do that. Hate cannot drive out hate, only love can do that", in honour of Dr Martin Luther King Jr. This led to discussions about the importance of togetherness during lockdown, the importance of helping each other, and how these dark times could only be overcome by positivity and light.

The bright colours used in the video were inspired by geological satellite images of the Earth, which look a lot like paint-poured artworks.

ArtWorks SY is a collective of over 80 artists with learning disabilities, autism or both based in Sheffield and Rotherham in South Yorkshire. ArtWorks aims to challenge people's perceptions of learning disabilities and autism through celebrating the creativity and ambition of our artists.

Canopy of Stars has been specially commissioned for Nightfall 2021.

LIGHTWAVES

by Impossible

Vibrant colours ripple between trees, triggered by passers-by as they move along the path beneath. These playful colour-changing lights respond to people's movements along the path, creating an ever-changing light and colour effect.

RAY OF LIGHT

by Hi-Lights

An almost never-ending beam of light breaks the darkness above Stewart Park, shining hope into the skies. This single ray of white light is a tribute to the difficulties that have faced us all over the last year. It is the lifting of shadows, a symbol of positivity and the light that is at the end of the tunnel.

HARMONIC PORTAL

by Chris Plant

Harmonic Portal is minimalist meditation on sound and colour. It is an investigation of how our minds create a continuous colour spectrum, from just the 3 frequencies of red, green and blue light, creating a synthetic colour organ that explored and magnified both the inside and the outside of the frame.

Originally commissioned for Lumiere Durham.



VIEWS THROUGH THE MACROSCOPE

by Chris Plant

Over the past few years, Chris has been experimenting with slide projection, from hacking 1950's slide projectors to super-powered LEDs and then exploring hand-making slides. Spurred on by daily covid walks, he started collecting leaves, blossom, flowers, seeds, and feathers which he used in the projector like a microscope.

This year he found an obsolete slide scanner which he has coaxed into use and prints the images onto acetate. The images aim to bring a deeper awareness of the intricacies of the world around us, that the natural world so close and familiar that we pay it little attention, can be a wondrous thing. Treasures lie at our feet.



FIRESIDE STORIES

by Stellar Projects with performances by Fully Booked

Inspired by magical memories of tales around the campfire, this rotating sculptural piece brings to life the charm of a glowing fire, creating a focal point for the sharing of stories and families coming together. Internal lighting and beautiful laser cut flame patterns magically combine to create the appearance of a giant, dancing fire, burning bright and strong in the surrounding landscape.



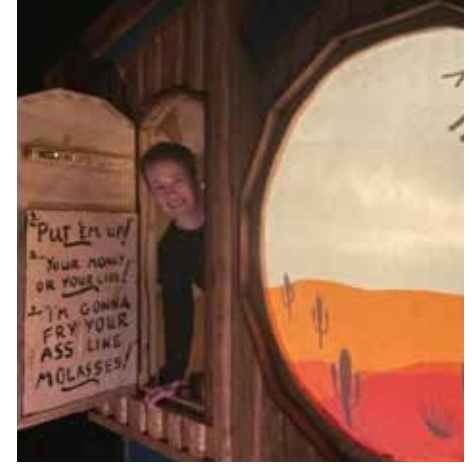
JOURNEY TO A FORGOTTEN WORLD

by Fully Booked Theatre

Fireside Stories will be brought to life with performances of Journey to a Forgotten World, an enchanting show devised and performed by Fully Booked Theatre.

Two friends, divided by disaster, driven together by love.

Based on the tales Hans Christian Anderson, this magical fireside story will transport audiences to old legends and alien landscapes with an uplifting tale of the enduring power of love and the human spirit suitable for children and families. Featuring an original script by Harry Man and choreography by Jennifer Essex.



MAGIC LANTERN

by Ian and Jo Douglas

Nestled down at Nightfall this year will be the Magic Lantern - a curious space packed full of shadows, moving images, stories and music all brought to life by storyteller Ian Douglas and puppeteer Jo Douglas. Gather round and immerse yourself in the lantern's magic, as it weaves tales of winter that will warm the heart.





NOCTURNAL ANIMALS

by The Lantern Company

Beautiful glowing lanterns, designed and created by The Lantern Company take residence in a corner of the park woodland. The lanterns are a selection of woodland animals, usually elusive but gloriously illuminated for Nightfall. Look out for badgers, a fox and you might just see a hedgehog or two.

RAINBOW IN THE DARK

by Benjamin Clegg

Rainbow in the Dark creates a magical moment across the ponds in the park. A beautiful rainbow is created with a laser and projected inside are mandala films created by Benjamin by filming the five elements of nature, then using Phi/Golden mean numerology to create multi-layered vortexes of spiralling light. The two light sources blend into one hypnotic form that is held on a water screen and hangs in the air in a 3D space with smoke, ever drifting and tumbling. Some of the

trees in the pond area will also be colourfully lit to create a very special effect.

This is an immersive, playful and joyful experience that never ceases to amaze and bring a moment of magic to people as they interact with it. Enjoy this special artwork which illuminates the ponds as you've never seen them before and experience the joy of walking into a rainbow.

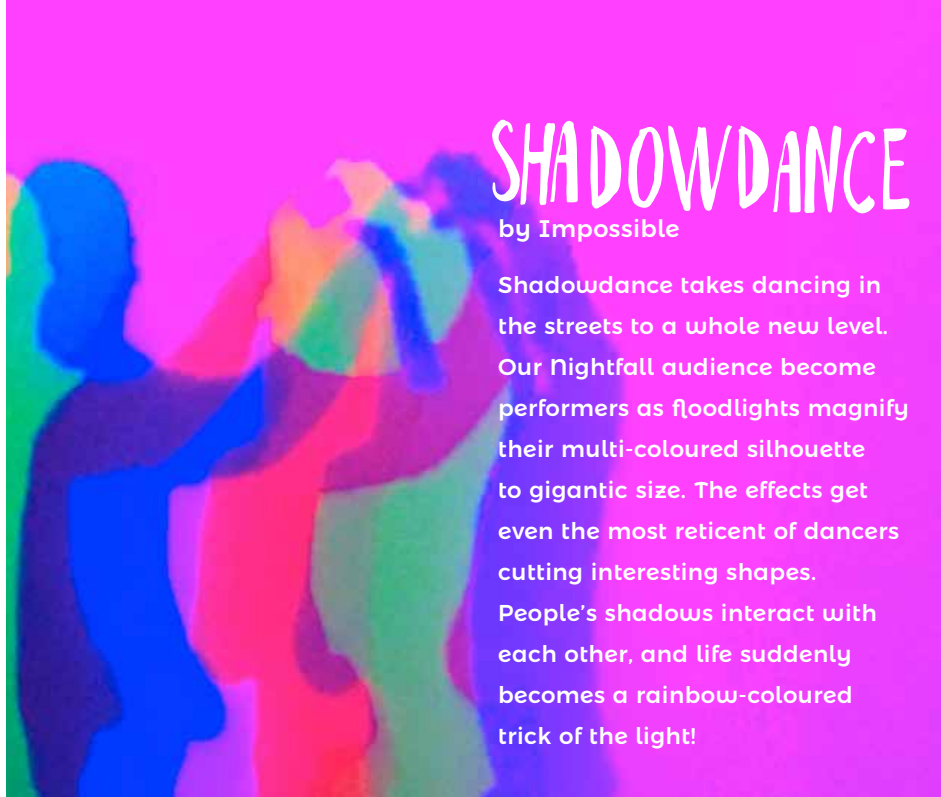


SPIRAL OF LIGHT

by Travelling Light Circus

Travelling Light Circus are masters of creating amazingly cool, oversized 'toys' that release the inner child of everyone - this is a chance to have fun and play! Spiral of Light is a piece of interactive art with thousands of LEDs where the Nightfall audience can control the colours and patterns of this larger-than-life spiral suspended in the trees.

Originally commissioned for Kew Gardens.



SHADOWDANCE

by Impossible

Shadowdance takes dancing in the streets to a whole new level. Our Nightfall audience become performers as floodlights magnify their multi-coloured silhouette to gigantic size. The effects get even the most reticent of dancers cutting interesting shapes. People's shadows interact with each other, and life suddenly becomes a rainbow-coloured trick of the light!

MOTHS AT WORK

by Pif Paf

Around the route, look out for the Moths at Work - two disco moth electricians tour the park in a giant inflatable light bulb, gathering and sharing out joy and light. Ray and Flash (the electricians) will play uplifting tunes, dance and roam across the paths - audiences of all ages will love their cheeky cheer!

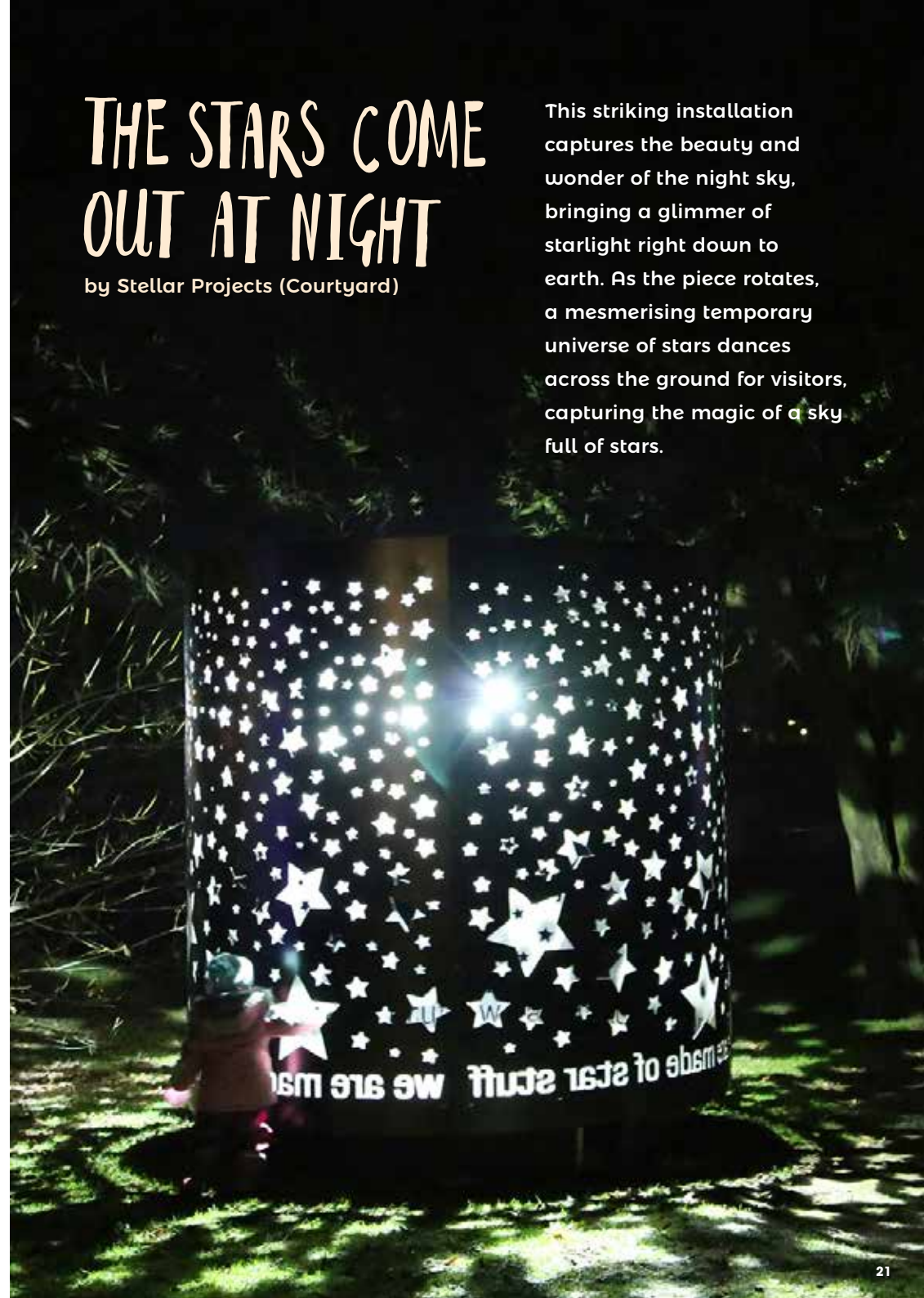
Moths at Work was originally commissioned by Stellar Projects for Redcar and Cleveland Borough Council.



THE STARS COME OUT AT NIGHT

by Stellar Projects (Courtyard)

This striking installation captures the beauty and wonder of the night sky, bringing a glimmer of starlight right down to earth. As the piece rotates, a mesmerising temporary universe of stars dances across the ground for visitors, capturing the magic of a sky full of stars.



CELEBRATE THE END OF THE RAINBOW

(with music and refreshments!)

At the end of the Nightfall light trail, take a well-earned break in our lovely dwell space where you can listen to some live music and have a drink or snack at our street food area. There will also be opportunities for families to get creative and take part in one of our drop-in workshops.

Nightfall Lates Music Programme

We have been working with the awesome BaseCamp Boro who have put together a fantastic programme of live music for us across each evening of Nightfall. You can enjoy some amazing local talent to get you in the mood for celebrating (it's nearly Christmas after all!). Get yourself a drink (and maybe a snack), relax and enjoy the music.

Get crafty at Nightfall!

Unleash your creativity and drop into one of our workshops which are led by professional artists. Create something lovely to take home as a memento of your night, including a colourfully patterned handheld light installation; a dream catcher or a swirling galaxy pinwheel that is out of this world!

All workshops are drop in across the evening from 5pm - 9.30pm (approx.) Activities are free with all materials provided. Workshops are suitable for children and their adults.

Workshops artists are Sofia Barton, Duncan Burnett, Morwenna Catt, Jenny Mc Namara, Lottie Smith and Hazel Soper. Created in partnership with Navigator North.



Nightfall Nosh

At the end of the trail, warm up with some delicious food from a range of brilliant businesses from across Teesside and the North East. Veggie, vegan and gluten free options available.

Henry's Café (on site café in the courtyard at Askham Bryan College, open for the event Thurs - Sun)

Parm O'Rama (Thurs - Sun)

GRK Greek Street Food (Thurs - Sun)

Cook's Pizzeria (Fri and Sun)

Spud Gun (Thurs, Fri and Sun)

Whitley Bay Pizza Company (Sat only)

Fat Hippo (Thurs - Sun)

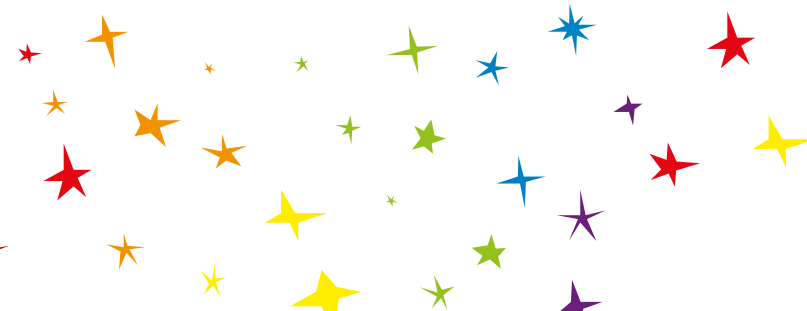
Flip n' Fast Crepes (Thurs - Sun)

The Waffle Co (Thurs - Sun)

There will also be delicious hot coffee and warm drinks every evening from San Seb Coffee (main entrance) and Barista Sisters (Courtyard).

Alcoholic drinks including mulled wine and cider, baileys hot chocolate, winter cocktails and draught beer will be available from Tap Garden and Thirsty Horse Bar

Cook's Café will also be open at Captain Cook's Birthplace Museum if you fancy stopping off along the route.



ONLINE PROGRAMME

Your Nightfall experience doesn't end at the event! We have put together a programme of online activity which you can access after your Nightfall visit to keep the happy rainbow feeling alive! You will be able to get creative with colouring in and making your own diorama and cosy up and listen to storytelling with the brilliant Ian Douglas. You will also have access to the wonderful poems and stories that were created for this year's Nightfall and a rainbow-themed puppet theatre show by Eye of Newt who bring the tiny world of The Hare and The Moon to life. We will also include performances that are part of the Nightfall event - so you don't need to worry if you missed anything! The programme will be available after your visit at

www.nightfallfestival.co.uk

A huge thank you to Arts Council England, Middlesbrough Borough Council, Tees Valley Combined Authority, Askham Bryan College, Captain Cook Birthplace Museum & Middlesbrough Sports Village for supporting the event.



Supported using public funding by
**ARTS COUNCIL
ENGLAND**



TEES VALLEY
COMBINED
AUTHORITY | TEES VALLEY MAYOR

**ENJOY
TEES VALLEY**

stellar projects
producers of creative projects and imaginative events



MIDDLESBROUGH
SPORTS VILLAGE

ASKHAM BRYAN
COLLEGE